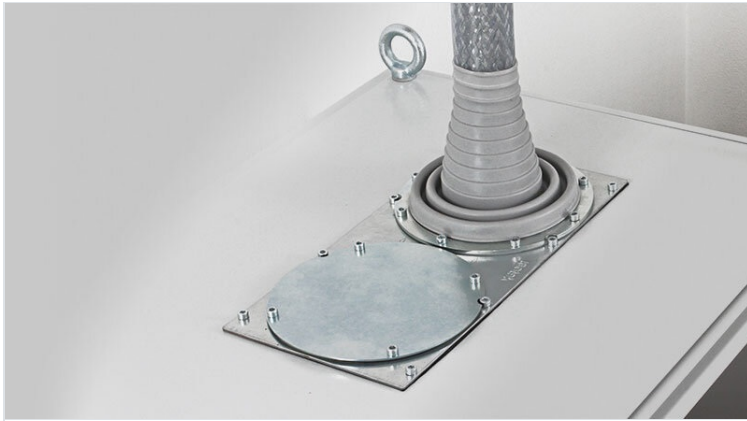


KEL-ULTRA flex pyramid cable entry grommets

for single cables with diameters up to 115 mm / IP66 / UL Type 12

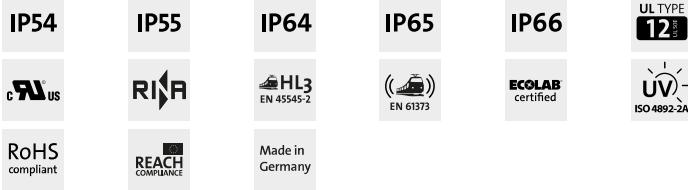


The KEL-ULTRA flex is designed as a cable entry grommet for any large cable or conduit that is difficult to manage. The KEL-ULTRA flex comes in two sizes and is ideal for routing and sealing cables and conduits with a diameter from 25 to 115 mm. Due to the high flexibility of the elastomer pyramid, inserting large, thick cables with KEL-ULTRA flex is easier than using standard cable glands.

After inserting the cable or conduit, the KEL-ULTRA flex is quickly and easily mounted with the metal ring and screws. This ring enables a circular fixing and sealing of the grommet at the enclosure wall. The ring is supplied with each KEL-ULTRA flex.

It is recommended that additional strain relief be provided for cables using cable ties.

Cutting of grommets: Cable diameter less 25%. The corresponding diameters are marked on the grommet.



Specifications

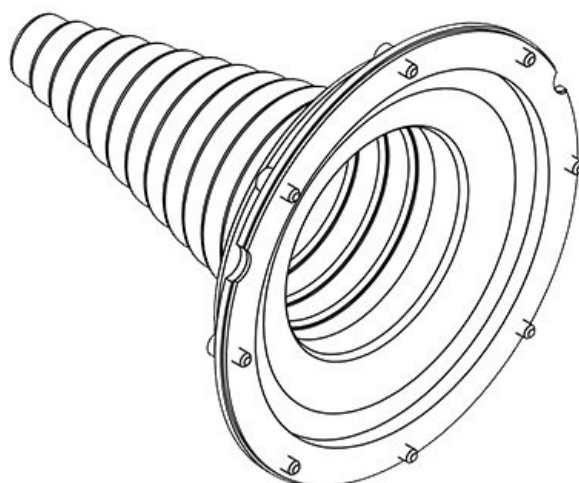
IP rating (EN 60529)	IP54, IP55, IP64, IP65, IP66
UL Type (UL 50E)	UL Type 12
Material	Elastomer Fixing ring: Steel, zinc plated
Flame class	UL94-V0, self-extinguishing
Operating temperature	-40 C° to 100 C°
Properties	silicone free, halogen free
Mounting options	Screw type mounting

Advantages & Benefits

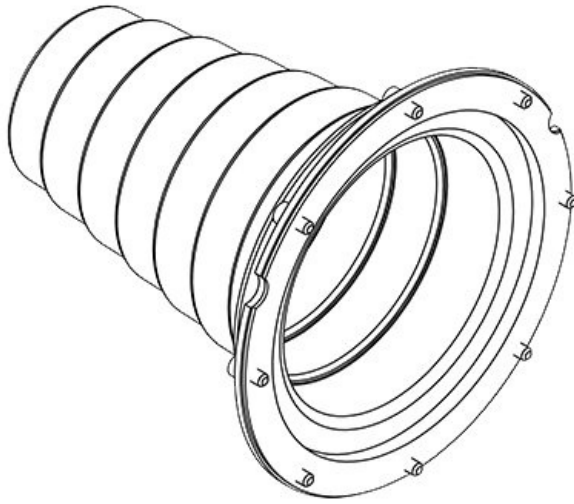
- It is possible to install rigid cables at angles
- Certified protection IP66 (acc. to EN 60529)

Product Types & Sizes

KEL-ULTRA flex 1



Part No.	42630	External diameter	168 mm
EAN	4251269309	Cut-out size, round	140 mm
Package quantity	1	No. of screw holes	8
For max. no. of cables	1	Diam. of screw holes	5,5 mm
Max. cable diameter	90 mm	Clamping range	25 - 90 mm
Height	175,5 mm	Clamping range	1 x 25 - 90 mm
Mounting height	175,5 mm		



Part No.	42631	External diameter	168 mm
EAN	4251269309069	Cut-out size, round	140 mm
Package quantity	1	No. of screw holes	8
For max. no. of cables	1	Diam. of screw holes	5,5 mm
Max. cable diameter	115 mm	Clamping range	75 - 115 mm
Height	175,5 mm	Clamping range	1 x 75 - 115 mm
Mounting height	175,5 mm		